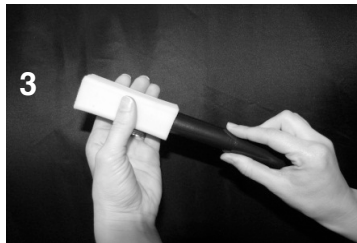
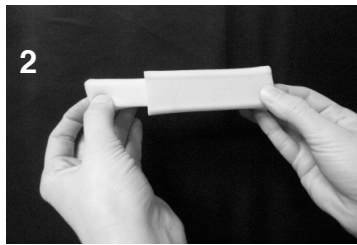


FOR TOILET PAPER

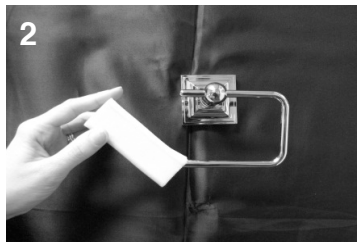
DISPENSER WITH REMOVABLE BARS

1. Slide rubber washer onto larger end of bar.
2. Remove the inner core of Control-n-Roll that is slightly smaller than the bar.
3. Push larger end of bar through Control-n-Roll.
4. Slide Control-n-Roll into toilet paper roll.
5. Load paper roll onto dispenser so that it pulls from the top



DISPENSER WITH NON-REMOVABLE BARS

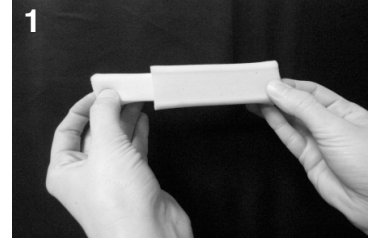
1. Remove the inner core of the Control-n-Roll that is slightly smaller than the bar.
2. Push and slide Control-n-Roll onto the bar.
3. Load paper roll onto dispenser so that it pulls from the top



FOR PAPER TOWELS

DISPENSER WITH CENTER BAR

1. Remove the inner core of Control-n-Roll that is slightly smaller than the bar.
2. Pull Control-n-Roll over the center of bar and slide to end.



Note: Some dispensers may require a second Control-n-Roll.

DISPENSER WITHOUT CENTER BAR (requires 2 Control-n-Rolls)

1. Pull the two smallest inner cores half way out of Control-n-Roll.
2. Fold the inner core back over the Control-n-Roll.
3. a) Push Control-n-Roll into one end of paper towel roll, b) until flush.
4. Install the second Control-n-Roll in the other end.
5. Load paper roll onto dispenser so that it pulls from the top.

